



KATHY'S KREATIONS  
141 East Main Street  
Ligonier, PA 15658  
724-238-9320  
DECEMBER 2017 UPDATE

Dear Stitchers,

It's the season filled with smiles, sparkle and magic once again -- we are in the holiday home stretch! Kathy's Kreations has amazing gifts for you to make, give, or keep. We are excited to share our newest collections with you -- from free-spirited and casual to fabulous and festive -- stirring up anticipation of what's to come.

Bundling-up weather has begun! Knitters and crocheters are well prepared to deal with chilly temps with the right layers crafted in the warmest fibers. Chunky yarns, warm throws, comfy sweaters, thick socks, toasty cowls and scarves, and quick-knit colorful hats will keep you covered during the frosty months ahead. Perfect layering pieces make wonderful gifts.

It continues to be a superhot "hygge" (pronounced hoo-ga) season. This popular Danish lifestyle trend is one of those beautiful words that doesn't translate well into English, but it more or less means warmth, comfort or togetherness. Think happy home, a sense of well-being, and the art of cozy living. How does this affect us as knitters and crocheters? We can cozy up the world with projects like Nordic-motif colorwork mittens, Scandinavian-inspired yoked sweaters, tasseled topped hats and fluffy winter white neckwarmers. We hope that you find "hygge" everywhere you look this holiday and get comfy with winter knits that make you happy.

A hot yarn trend this season continues to be gradients -- self-striping yarns that gradually fade from one color to the next, either tonally or into other hues, letting the colors do all the work. But be on the lookout for speckles and semi-solids to make a big hand-painted fiber statement this season, especially in lush blends of silk, merino wool, and cashmere.

It's holiday "go time" and we are here to help you up with our large selection of fiber comfort and joy...

**"DECEMBER IS HAVE A WOOL YULE MONTH!"**  
10% off all purchases of in-stock, regularly-priced  
100% wool and superwash wool yarns  
throughout December 2017  
Hours: 9:00 am - 5:00 pm  
Monday through Saturday  
Townwide Merchants' Open House Sunday  
December 3, 2017, we will be open 11 am - 5:00 pm

We accept Mastercard, VISA, Discover, AX  
Private knitting and crocheting lessons  
Instructions are available by appointment  
Finishing services & gift certificates available  
Mail orders available -- no order too small!  
Shopping at Kathy's Kreations has never been easier  
COME IN - CALL UP - LOG ON  
Like us, follow us and share us on Facebook!  
"We Love Kathy's" on Ravelry

e-mail [kathy@kathys-kreations.com](mailto:kathy@kathys-kreations.com)  
please visit our website <http://www.kathys-kreations.com>



\*\*\* GREAT NEW STUFF \*\*\*

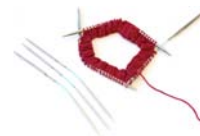
Give the gift of handmade this holiday season! Settle in for a cozy night surrounded by soft wool, stitching gear and your favorite warm beverage. Our carefully selected products will help you to create your own winter "hygge" escape with feelings of comfort and contentment. Knitting and crocheting will refocus the mind and refresh you. Here's what's new, what's now for the holidays and beyond, to turn cold into cool...

KNIT SIMPLE Winter 2017 (\$6.99) invites you to make winter a "hygge" season. The warm and cozy projects were inspired by this Danish lifestyle trend, knit in cushy, soft yarns in creamy shades, which are guaranteed to keep you -- you guessed it! -- warm and cozy all winter long. The Danish obsession with all things cozy is one reason why Denmark always tops the "World's Happiest Countries" list. The "Making The Gradient" feature highlights garments worked with self-stripping yarns or made from patterns that create the color design. What better way to top off your wardrobe than with 8 spectacular, easy-to-knit hats? The stylish toppers in this issue are mostly knit in the round, so no seaming is needed. We are also fond of the whimsical polar bear sweaters and cute accessories for kids...

INTERWEAVE KNITS Winter 2018 (\$7.99) is the "Chase The Chill" issue with knits made for warmth and worn with joy. Bundle up in knits inspired by the Northern Wilderness and Jack London's classic novel in the Call of the Wild fashion story. You'll find knits to chase away the chill, whether you are on an adventure far from home or taking a snowy stroll through your neighborhood. The North Country story "celebrates cherished moments with dear friends and family. This joy-filled story features rustic designs for both her and him influenced by traditional Icelandic, Scandinavian, Irish and even Cowichan knitwear. These updated classics combine ready-to-wear fashion aesthetics with heritage knitwear design from northern Europe, making this collection both timeless and unexpected." You will find knitting adventure and challenges to explore in this issue, including an excellent article on combating cable flare and an interview with June Hemmons Hiatt...

The perfect balance of luxurious super fine alpaca and Peruvian Highland wool is now available in a chunky weight, making BERROCO YARN's "Ultra Alpaca" family of yarn more versatile than before! BERROCO's "Ultra Alpaca Chunky" (\$12.50, 100 grams, 131 yards, 50% super fine alpaca / 50% Peruvian wool, CYCA #5) is the bulky weight cousin to the much-beloved "Ultra Alpaca", in a similar range of colors we've all come to know and love -- rich heathers, solids and delicious jewel tones -- each one beautiful on its own or in endless colorwork possibilities. Delightfully soft with amazing color depth, this yarn is a lovely and affordable choice for quick, warm projects such as hats, mittens, blankets and even sweaters. And, things just got a little more exciting with a new color range. Dyed in a palette of tonal colorways, "Ultra Alpaca Chunky Tonal" (\$15.50, 100 grams, 131 yards, 50% super fine alpaca / 50% peruvian wool, CYCA #%) is definitely appealing for outerwear...

Cast on to an effortless new method of knitting socks, cuffs, hats and many other projects worked in the round! Made specifically for North America, ADDI "Flexi Flips" (\$24.50 per set, shown lower right) are specially designed 21 cm circulars that rest comfortably in the hand, and act as flexible double-pointed needles. Easy to use, stitches are simply distributed over two needles, and then knit with the third -- resulting in only two needle changes per round. Featuring the same dual-tip design as ADDI "FlipStix", the "FlexiFlips" feature both an ADDI Rocket tip and an ADDI Turbo tip. They also make great cable needles. Each set includes three "FlexiFlips" of the same size and are packaged in a handy reusable storage tube. You will always have the right needle when you need it...



\*\*\* MORE GREAT NEW STUFF \*\*\*

LISA KNITS introduced two designs recently at Knittreat in Deep Creek MD's Wisp Resort (\$5.00 each). "A Bear in the Forest #AC-042" (shown right) is a scarf worked in two sections and grafted at the center back with the Kitchener stitch. Each end features a large bear paw pattern border with wrap stitches and the body of the scarf is made up of a lacy "tree" pattern. The "Bears & Berries #AC-043" cowl is worked in the round, and features a bear claw pattern stitch and mini bobbles. Both designs are worked with worsted weight yarn and are currently on display in our shop. Did you know that one of our traditional holiday foods, cranberries, are often called bear berries because bears love to eat them?



© Copyright 2017  
Lisa Knits

One of our most popular yarns for afghans and accessories is BRETT "Marble Chunky" (\$15.50, 200 grams, 341 yards, 100% acrylic, CYCA #5). Constructed of two different self-striping threads twisted together to produce a beautifully variegated yarn, this easy-care fabulous fiber knits to a bulky weight gauge in practically no time at all. Four new shades have just arrived for your knitting and crocheting pleasure...

ADDI Olive Wood circular needles will give you a truly luxurious knitting experience. The olive wood is incredibly smooth and comfortable to hold, as all tips and grips attain body temperature quickly -- this makes them a great choice for arthritic hands. Ethically sourced from the wood of non-fruit-bearing olive trees, each beautiful grained needle is finished with a plant-based oil to protect its unique look. The joins are smooth and non-catching. ADDI has made a real treat for knitter's hands, so treat yourself today!

It's beginning to look a lot like Christmas -- let's stuff some stockings! Things that knitters and crocheters will love to find in their stockings are: LO-LO products of all kinds (LO-LO to go \$8.50; LO-LO head-to-toe bar \$14.95; LO-LO Lips \$4.50; or LO-LO Cuticle Intensive \$6.95); Magnet Buttons closures \$14.95; shawl pins of all shapes, colors and sizes \$16.50; nail file \$3.50; "Magic Wand" needle keeper (\$8.50); PORTER FARMS stitch markers (\$3.50); SKACEL knitting-inspired bangle bracelets complete with knitting charm stitch markers (\$24.50); SUSAN BATES Handi-tool for repairs (\$2.19); EUCALAN 3.3 oz. travel size (\$5.95) and much more. Don't forget to include a travel size EUCALAN with your handmade gift as a gentle reminder to the recipient to care for their handmade items...

Life is better with color! DREAM IN COLOR challenged themselves to dye the prettiest colors ever -- just for you! Their new exciting array of crave-worthy gorgeous colorways emphasizes their genius for creating hand-painted yarns. Over the next few weeks, we will be introducing the new color palette (two have arrived so far). Meet the beautiful blue family, shown upper right page 5, in six new speckled colorways and five coordinating semi-solid shades (Smoochy with Cashmere, \$30.50, 4 oz., 400 yards, 70% superwash merino wool / 20% cashmere / 10% nylon, CYCA #1 and Jilly with Cashmere, \$32.50, 4 oz., 440 yards, 70% superwash merino wool / 20% cashmere / 10% nylon, CYCA #2).

Flowers, leaves, herbs, plants, all things green and living -- this is a little known way that people in the Victorian era would share thoughts and feelings with each other. It's called Floriography and it is the secret language of flowers. This is the inspiration for the teals / turquoise colors, inspired by reflections of all things Victorian and the magic of a sweet tussie mussie. The teal palette is also being introduced in six new speckled and five co-ordinating semi-solid shades of "Jilly with Cashmere" (shown at left). We are very excited to premiere more shades of the new DREAM IN COLOR yarn palette throughout the next few weeks...



© Copyright 2017  
Dream In Color



\*\*\* DECEMBER KNIT ALONG (KAL) \*\*\*

For our December 2017 knit along, we've chosen three of our favorite CHURCHMOUSE CLASSICS patterns and paired them with our newest yarns, soft-to-the-touch BERROCO YARNS "Ultra Alpaca Chunky" and "Ultra Alpaca Chunky Tonal". These supersoft yarns encourage cozying up and making spirits bright. Choose from the "Diagonal Striped Garter Stitch Loop" (shown upper left, a variation on the 'Before & After' scarf), a two skein project; "Mistake Rib Beanie & Scarf" (pattern \$6.50), using one skein for beanie, two skeins for scarf or the "Half & Half Cowl" (pattern \$6.50) from the class taught last month by Marian Lech, a three skein project. There's something for everyone on your gift list, and for the time commitment you have available (of course, you can always get a head start on next year!).

We hope that you will join us every Friday in December here at Kathy's Kreations from 10 am - 2 pm for this group project, the continuation of previous KALs, or any other works in progress purchased here. If you can't join us in person, please follow us on the December 2017 shop thread at "We Love Kathy's" on Ravelry...

\*\*\* 2017 HIKOO HAIKU CONTEST \*\*\*

SKACEL COLLECTION will be running a HIKOO-themed haiku contest for a lucky customer, with the winner receiving \$500 worth of HIKOO yarn from their favorite LYS (Kathy's Kreations, we hope!). The contest begins now, and will end on December 15, 2017. There is no purchase necessary. You simply send in the submission form (available at Kathy's Kreations) along with your haiku, and send it on its way to SKACEL.

OK, the first question we had is "what's a haiku?" "Haiku" is a traditional form of Japanese poetry renowned for its small size as well as the precise punctuation and syllables needed on its three lines. Haiku poems consist of 3 lines which rarely rhyme. The first and last lines have five syllables and the center line has seven syllables. Haiku poems are typically about nature and usually about a specific season, but SKACEL would like you to include something about your favorite HIKOO yarn (several are available around our shop for inspiration)...

\*\*\* TIPS AND TRICKS \* \*\*

When picking up and knitting stitches for a neckband, avoid picking up a stitch in the awkward holes at corners before and after the neck bind-off. The gap will be minimized. If it is still noticeable, snug up the gap afterwards with a tapestry needle and a bit of yarn. This also applies to sock gussets...

Alter the length of your garment as you wish by adjusting the number of rows you work before starting the armhole shaping. Remember that altering the length will affect the amount of yarn you will need...

If you are unsure about what type of lower edging you want, use a provisional method of casting on, then come back later to work the edging downward from the cast on row...

\*\*\* POP-UP CLUB \*\*\*

Happiness! Even more amazing speckles are headed your way from DREAM IN COLOR! Featured this month in Pop-Up Club is new yarn "Blue Faced Leister 2-ply" (\$32.50, 4 oz., 420 yards, 80% BFL wool / 10% cashmere / 10% silk, CYCA #1, shown lower right). Cashmere and silk add just the right amount of luxury and softness to the wonderful wool yarn. Although there is no specific pattern recommended for this yarn, we suggest CHURCHMOUSE CLASSICS "Ribbed Lace Scarf" or "Polka Dot Scarf" (\$6.50 each), either of which would be stunning with this yarn...



\*\*\* INHERITANCE \*\*\*

Our sincere thanks to Andrea Springer, the Knitting Savant, for graciously sharing her column from *The Pennsylvania & West Virginia Register* November-December 2017. Perhaps her words will inspire you to do some creative stash busting. Andrea writes:



© Copyright 2017  
Dream In Color

"Sometimes life drops a happy coincidence in your lap. One of my favorite recent coincidences was running into the daughter of a former co-worker at a volunteer event. She was a young thing when I worked with her mother, and it's been a delight to get to know her as an adult. Her mother passed on a few years ago, but my friend remembers her in small ways every day. Earlier this year she asked if I could help her go through her mother's knitting bag and then, teach her to knit. My response? 'Absolutely.'

Many of us have had the good fortune (or misfortune, depending on your perspective) of being the recipient of someone else's 'stash.' Sometimes it's the knitting bag with yarn, tools, a pattern or two and maybe an unfinished object (UFO), and sometimes it's boxes of yarn, books, needles and magazine -- all curated by a crafter with a vision. It's fun looking through vintage patterns and notions, oohing and aahing over that half-finished baby sweater, but then what? Here are a few things to consider:

Yarn -- Check yarns that you know are older than a decade. Acrylics may be perfectly fine to knit with, but natural fibers tend to degrade over time. The easiest way to test is to pull a length off of the skein and see if it pulls apart easily. If so, it's past its prime. Sometimes the outside of the skein is weak but the inside yarn 'hangs together' like it's supposed to and can be used in projects. The deteriorating yarn can sometimes be used in a needle felting project, but sometimes, it just needs to be tossed.

You may find partial skeins -- some with labels and some without. If you have the label, you can weigh the partial skein on a kitchen scale and calculate the remaining yardage based on the total yardage and ounces provided. If you don't have the label, you'll need to determine the type of yarn it is (DK, worsted, bulky, etc.) based on the 'wraps per inch' or 'wp'. Grab a ruler and the mystery yarn and count the number of times you can wrap it over one inch. You can find a handy reference chart for 'wraps per inch' conversions at [ravelry.com](http://ravelry.com).

Needles -- While needles and notions are fairly standard over generations, not all needles over the years were marked with sizes. Use your trusty needle gauge to check sizes.

My friend found some yarn and a pair of needles in her mother's bag and has started her knitting journey. Over the last year, she's moved from making practice swatches to knitting fingerless gloves and has new projects on the horizon. It's been a lovely way to use the creative tools she inherited and lets us both remember the special person her mother was." --- Andrea Springer blogs at [www.knittingsavant.com](http://www.knittingsavant.com) where she helps folks remember that they have everything they need to be successful in knitting and in life. You can share comments or ideas with her at [andrea@knittingsavant.com](mailto:andrea@knittingsavant.com) or follow Knitting Savant on Facebook and Twitter.

\*\*\* HOW MUCH YARN DO I NEED? \*\*\*

At this time of year, we are often asked: "How much yarn do I need?" by folks who are looking for gifts for knitters and crocheters. Here are some guidelines which might be helpful when going through stash or when buying yarn on speculation for a "generic" project. If in doubt or working a large size, err on the side of caution and buy more rather than less:

Scarf: 525-825 yards lace; 450-625 yards fingering; 375-500 yards sport/DK; 375-500 yards worsted; 250-375 yards bulky; 250-375 yards super bulky

Socks: 350-500 yards lace; 300-450 yards fingering; 275-400 yards sport/DK; 275-375 yards worsted; 200-250 yards super bulky

Adult average sweater: 3375 yards lace; 1750 - 2625 yards fingering; 1500-2250 yards sport/DK; 1125-1625 yards worsted; 950-1125 yards bulky; 825-1125 yards super bulky

Baby blanket: 1500-1625 yards lace; 1250-1500 yards fingering; 1125-1250 sport/DK; 1000-1125 yards worsted; 875-1000 yards bulky; 750-875 yards super bulky.

\*\*\* SEQUENCE KNITTING \*\*\*

It was recently our pleasure to host members of the Roof Garden Knitting Guild; Somerset, PA for a Monday afternoon knitting session. Mary Anne Showers told us about a technique from a book by Cecelia Campochaiaro that has inspired her -- sequence knitting. The concept is fairly simple: take a sequence of stitches and repeat them again and again. Different fabrics can be created, depending on how the stitches are repeated. Mary Anne shared a reversible two-row, two-color scarf that intrigued us. She graciously shared her pattern with us. Thank you, Mary Anne!



MARY ANNE'S OVER & OVER AGAIN SCARF

FINISHED SIZE: approximately 6" X 64"

MATERIALS: two skeins Aran weight yarn (one in Color A, one in Color B)\*\*; US size 9 knitting needles -- \*\*suggested yarn - PLYMOUTH "Encore" worsted weight, 200 yards /skein

GAUGE: Approximately 4 stitches = 1", gauge not critical

PATTERN STITCH

All rows: \*Knit 4, purl 4, knit 2, purl 2; repeat from \* to last 2 sts, end knit 2.

Repeat this row for pattern.

NOTE: Carry color not in use up side of work. Project is worked back and forth.

DIRECTIONS

With color A, cast on 26 stitches. Work 2 rows in pattern stitch with color A. Drop A. With B, work 2 rows in pattern stitch. Continue to work in this manner, 2 rows of each color, until piece measures 64" or desired length. Cut yarn, weave in ends. Fringe with any remaining yarn, if desired. For a wider scarf, cast on 38 stitches. You may need more yarn.

© 2017 Mary Anne Showers. All rights reserved. For personal use only. Please do not sell copies of this pattern or items made from this pattern without permission.

\*\*\* HOLIDAY LAST-MINUTE GIFT IDEA \*\*\*

Need a gift in a hurry? Mary Anne Showers also shared a great idea. She knit dishcloths throughout the year and keeps them neatly organized in a basket. When unexpected visitors arrive bearing a gift or someone "needs" a dishcloth, she produces her basket and lets them choose a handknit dishcloth. Susan Barclay plans to do something similar "for next year" with spa facecloths made from linen yarn paired with handmade soaps. These would also make ideal hostess gifts. What a great New Year's resolution -- always be prepared!

\*\*\* "SANTA" KNIT GIFT CARD HOLDER \*\*\*

If all else fails, we have Kathy's Kreations reloadable gift cards! And here is the perfect little knit package for your gift card -- our version was inspired by a free internet pattern by petalstopicots.com found on Ravelry which Kathy re-interpreted just for you.

FINISHED SIZE: approx. 4" length X 2-1/2" width X 1/2" depth

MATERIALS: 20 yards red worsted weight yarn, 2 yards black worsted weight yarn, 2 yards white fuzzy or metallic yarn; US size 7 knitting needles; small amount gold thread for "buckle" embellishment

GAUGE: 5 sts / 7 rows = 1" in stockinette stitch

DIRECTIONS: With red, cast on 12 stitches, leaving an 8" tail. Knit 3 rows. Cast on 7 stitches at the beginning of the next 2 rows -- 26 stitches. Work in stockinette stitch (knit one row, purl 1 row) for 12 rows, ending with a wrong side row. Drop red, attach black. Work 2 rows stockinette with black. Cut black. With red, work 6 rows in stockinette. Cut red. Attach white. Knit 2 rows for cuff. Bind off all stitches. Cut yarn. Stitch a square in center of front black section for a "buckle". Bring sides together at center back & sew seam. Fold bottom up & sew in place. Weave in ends.



image gleaned  
from Pinterest

\*\*\* CALENDAR OF EVENTS \*\*\*

**Town-wide Open House Sunday, December 3, 2017 11:00 am- 5:00 pm**

Ligonier is absolutely magical during the holidays. Enjoy the carolers and do your "shop small" shopping with us!

**Friday, April 6 - Sunday, April 8, 2018:** Creative Arts Festival (formerly known as The Pittsburgh Knit & Crochet Festival), the area's premier knitting Conference and Market, will be held in Hall A at David L. Lawrence Convention Center. Look for Kathy in the Market!

**Friday, April 20 - Sunday, April 22, 2018:** Kathy's Kreations invites you to join us for our 7th annual Spring Break knitting weekend, hosted and taught by our own accomplished knitter, designer and nationally-recognized instructor Kathy Zimmerman. The weekend workshop will feature "Knit To Fit", previously taught at Stitches events by Kathy plus added information on adapting commercial patterns, sizing, and more! If you are not sure how to adapt that beautiful sweater you love to fit your body, Kathy shares her professional designer tips and her "worksheet method" for getting a custom fit worthy of your time and effort! Now, you can truly make it your own! For information on the weekend, please contact Kathy at 724-238-9320 or [kathy@kathys-kreations.com](mailto:kathy@kathys-kreations.com) to request a flyer and registration details.

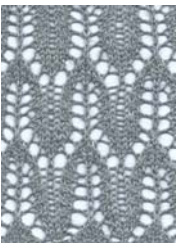
\*\*\* LOCAL YARN STORE DAY \*\*\*

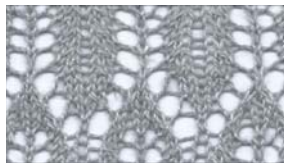
Do you know about the first annual Local Yarn Store (LYS) Day, April 21, 2018? This coast-to-coast event is designed to drive yarn buyers into the brick-and-mortar shops. Think of it as a nationwide yarn crawl. Think of all the added things that a LYS offers that an on-line store cannot. Touching the yarn, seeing the colors, seeing sample garments and projects and getting personal assistance are in-store experiences that you can't find on the internet. Stay tuned for more information on our plans for this upcoming event, which happens to coincide with our Spring Break 2018!

\*\*\* UPCOMING LACE CLASS SERIES \*\*\*

If you love lace, Michelle Hunter's latest installment in her book series, *Building With Lace* (\$20.50), is the perfect next project for you, designed to take the casual knitter to an experienced level. In this book, Michelle has designed a beautiful sampler shawl with nine carefully chosen lace stitch patterns and a beaded border. These lace patterns illustrate essential lace skills such as the provisional cast on, reading charts, increases, decreases, lifelines, afterthought yarn overs, Japanese lace, Russian join, cabling without a cable needle, smocking stitches, Estonian nupps, applied borders, and adding beads. Join our instructor Kathy Erhard as she demonstrates these skills and work along to make your own gorgeous lace shawl as a wearable showcase of your skills. Classes begin **January 20, 2018 from 1:00 pm - 4:00 pm** at Kathy's Kreations, beginning with lace basics (swatch shown lower left) and will be held the third Saturday of each month from **January through October**. The mastery of each skill builds one upon another in subsequent patterns.

Michelle recommends SKACEL HiKOO "Rylie", a gorgeous blend of baby alpaca, mulberry silk, and linen for this shawl. The baby alpaca's inviting softness with mulberry silk's attractive luster and drape combines with linen's distinctive stitch definition to make your shawl stunning. Please choose Michelle's book and your favorite color of HiKOO "Rylie" from Kathy's Kreations (or one of her other select yarns) for this class and bring size US 6 24" circular needles. Together, we can take your knitting to a whole new level. Registration fee is \$20 per class. Call 724-238-9320 to reserve your place.





**\*\*\* CALENDAR OF EVENTS \*\*\***

Join the "First Mondays" Club for an evening of knitting, crocheting and fellowship, at Panera Bread Greengate in Greensburg, PA. Next meeting dates are Monday evenings **December 4, 2017 and January 8, 2018 (second Monday); 6:00 pm - 8:30 pm.**

**\*\*\* "KNITTING IN THE AFTERNOON" AT KATHY'S KREATIONS Tuesdays, December 12, 2017 and January 9, 2018; 2:00 pm - 5:00 pm (rsvp please) \*\*\***

Join us for stitching & lots of fun conversation. All skill levels of knitters & crocheters are welcome! Please call ahead to rsvp in case of a scheduling change...

**\*\*\* SATURDAY SIT-N-KNIT December 9, 2017 and January 13, 2018; 10:00 am - 2:00 pm; (rsvp please) \*\*\***

Join us at Kathy's Kreations for fellowship and stitching for projects purchased here. Open to all skill levels...

**\*\*\* FUN FRIDAYS, December 15, 2017 and January 19, 2018; 10:00 am - 2:00 pm \*\*\***

Come in for the yarn and leave with friendships! Join our "knitting community" for fellowship, stitching, and how-to's for projects purchased here. Whether this is your first project or your hundredth, this is the place for you to learn, grow and enjoy being with other knitters and crocheters just like you. Please call ahead to let us know you will be coming, as space is limited.

**\*\*\* DECEMBER KNIT-ALONG (KAL) \*\*\***

Stop by on Fridays in November from 10 am - 2 pm (rsvp please) to work on our newest KALs with your stitching friends to cheer you on. This month, we feature CHURCHMOUSE CLASSICS patterns in chunky weight yarns (see page 4, upper left) -- as well as WIPs from previous KALs. Not working on the KALs? **You are still welcome to come -- simply bring any knit or crochet project purchased at Kathy's Kreations and join the group (free!).** Follow us on "We Love Kathy's" Ravelry group December 2017 thread...

**\*\*\* "BUILDING BLOCKS" TUESDAY December 26, 2017, 10:00 am - 12 noon \*\*\***

Add to your knitting knowledge and learn some new techniques! Each month, instructor Karen McCullough introduces you to a new skill with a new block from Michelle Hunter's *Building Blocks* book. By the end of the series, you'll have a gorgeous lap throw. Registration fee \$10 plus materials, call 724-238-9320 for more details...

**\*\*\* "BUILDING WITH LACE" Saturday, January 20, 2018, 1:00 pm - 4:00 pm \*\*\***

Master lace knitting one technique at a time! Join instructor Kathy Erhard on the third Saturday of each month beginning in January 2018 for a skill-building series based upon Michelle Hunter's phenomenal book *Building With Lace*. Each class will focus upon a technique to broaden your understanding. The sessions include classic favorites, original designs, and even some beading. See details on page 7...

Private knitting and crocheting lessons available by appointment. Learning to knit or correcting mistakes are not the only reasons to have a one-on-one tutoring lesson. Learn new techniques like lace or short rows, or get help with a pattern before starting -- our instructors can do it all! Additional group classes are forming -- ask us for details. We would be glad to do a specific class topic for groups of 4 or more. Kathy's Kreations has been the helpful hands of experienced knitting for more than 37 years!

Merry everything this holiday season-- from small treats to major splurges! It's holiday "go time" and we are wishing you a "hygge" season filled with cheer, comfort and joy. Thank you for your continued support and the special relationship we share with each of you.

KEEP KNITTING AND CROCHETING!

Kathy